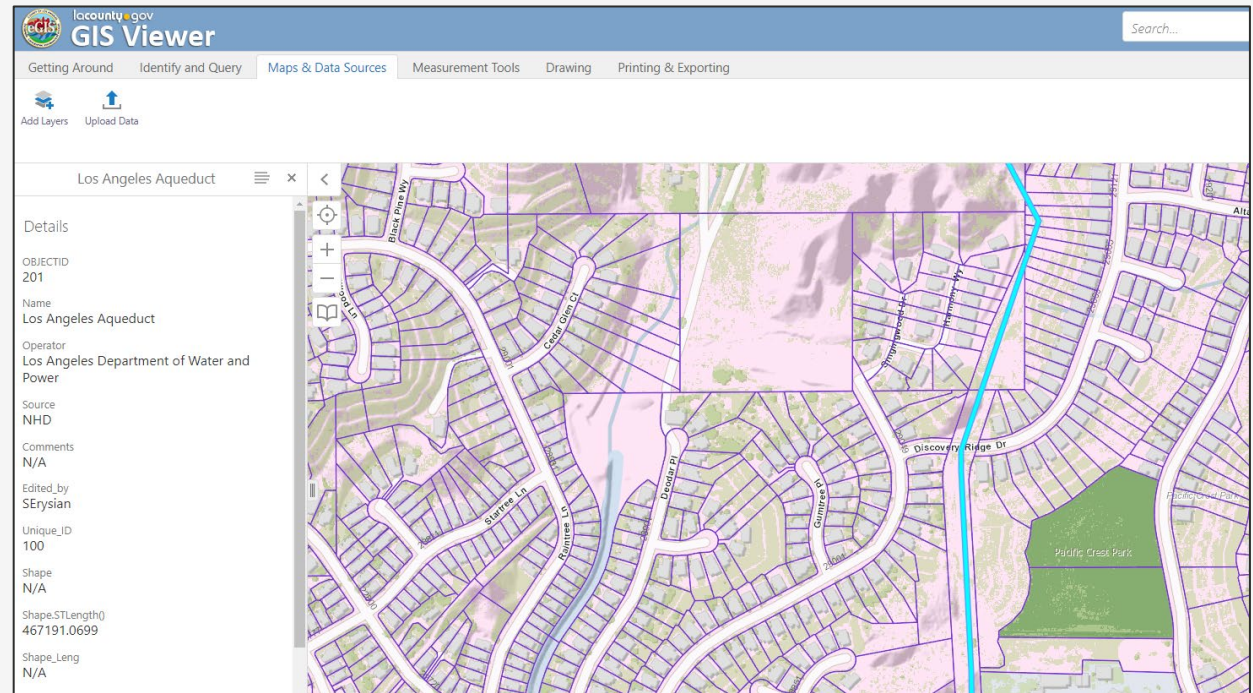


GIS Implementation Journey: A discussion with municipalities

California Regional Common Ground Alliance (CARCGA) Technology Committee
January 20, 2022

Agenda

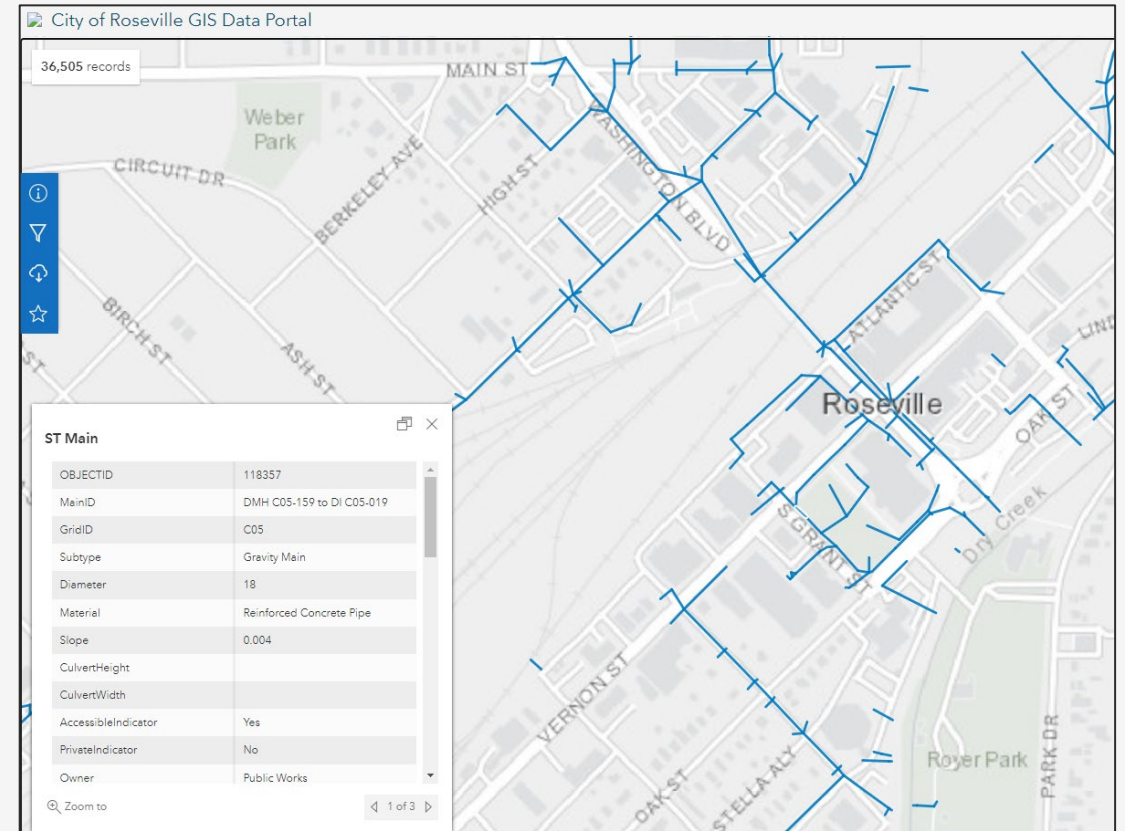
- About CARCGA
- Why we are here
- How to get involved
- Panelist presentation
- Q&A



LA County GIS Viewer – LA Aqueduct

Attendee Tips

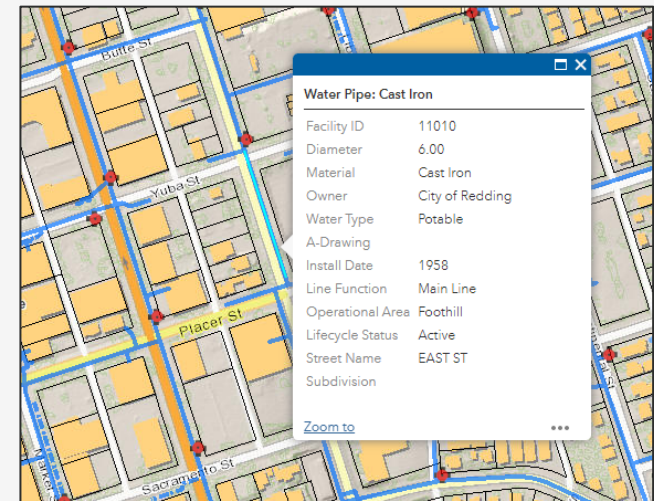
- Attendees are muted
- Cameras are turned off
- Use chat to ask questions
- Today's presentation will be recorded.
- Presentations and recording will be available on our website & YouTube Channel



City of Roseville GIS Data Portal – Stormwater Main

California Regional CGA

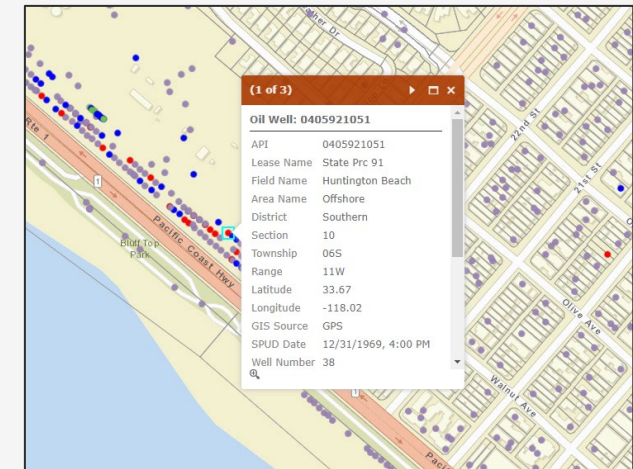
- CARCGA is a 501(c)(6) non-profit mutual benefit corporation dedicated to ensuring public safety, environmental protection, and integrity of underground services in California. CARCGA is a Regional Partner of the Common Ground Alliance (CGA). Through the effective promotion of CGA's damage prevention best practices, CARCGA boasts participation from a variety of stakeholders including but not limited to utility operators and professional excavators.
- On-line at www.carcga.org
- 125 members
- Subcommittees
 - Legislative & Regulatory
 - Education & Marketing
 - Subsurface Safety & Incident Prevention
 - Technology



City of Redding – Water Distribution System

Why we are here

- Provide information to help owners of underground lines be prepared to meet the new 4216 GIS requirement
 - *“Commencing January 1, 2023, all new subsurface installations shall be mapped using a geographic information system and maintained as permanent records of the operator.”*
- California Geographic Information Association (CGIA) webinars on Geographic Information Systems (GIS)
 - September 16, 2019
 - November 13, 2020
- Subsurface Safety and Incident Prevention Committee
 - Are these newly installed assets associate with new development?
 - Are these improvements to existing infrastructure?
 - When current assets are being rehabilitated or removed and replaced?
 - When routine maintenance is occurring?
 - When the replacement takes a different path?



Huntington Beach – Oil Well Finder

How to get involved

- **Membership application available at www.carcga.org**
 - *Stakeholder members* participate in committee and sub-committee meetings, have the right to vote on items brought before the committee and for appointments to the Board, can be elected to serve as a Director of the Board and can be designated as Chair or Vice-Chair of any committee. Current dues are \$100 per year for stakeholder members.
 - *Associate members* participate in committee and subcommittee meetings but have no rights to vote or serve as a Director of the Board or Chair or Vice-Chair of any committee.
- **Join committees**
 - Legislative & Regulatory
 - Education & Marketing
 - Subsurface Safety & Incident Prevention
 - Technology
- You may reach us at info@carcga.org

Panelist Presentation

- **Chris Schultz, Director of GIS, City of Shafter**

- Chris has over 18 years of experience working as a public servant, including military, Federal, and State of CA service. He has been working with GIS systems since 2007 and fully engaged as a GIS professional in the central valley of California since returning to Bakersfield in 2013. Currently, Chris serves the community of Shafter – a rural town outside of Bakersfield with a large GIS footprint! Additionally, Chris leads the staff at California State University - Bakersfield's GIS Certificate Program in an effort to educate young people within the growing career field. Outside of the profession, Chris has three small children to keep him busy and will be celebrating 20 years of marriage in August.

- [Presentation Link](#)

- **Russell Mercer, GIS Manager, City of Imperial Beach**

- Russell is a geographer focused on data management. Russell was first introduced to world of GIS while at University in Seattle. His career spans over 20 years within the field, the last 10 years as the GIS Manager at the City of Imperial Beach. Russell has built and expanded the GIS using a hybrid of FOSS4G and Esri technologies.

- [Presentation Link](#)

Q&A Session

Please use the chat to ask questions.
We will do our best to answer as many questions as possible.

Our Panelists

Chris Schultz
Director of GIS
City of Shafter
(661) 746-5086
cschultz@shafter.com

[Presentation Link](#)

Russel Mercer
GIS Manager
City of Imperial Beach
(760) 224-2099
rmercerc@imperialbeachca.gov

[Presentation Link](#)